

Protective Housing for DP113

protective housing 80 x 75 x 57

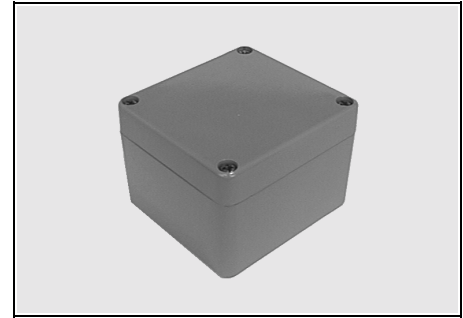
The protective housing is made of diecast aluminium and it is coloured silver-grey.

Normally a precision potentiometer / rotary sensor DP113. / DP120. (see table) has been built in, other types can be obtained on request.

The protective housing is fit with unlosable screws (stainless steel) and a neoprene seal. Therefore the housing protection class is IP65 (protection against dust and water jet).

Two metal watertight cable entries were built into the protective housing, one can be replaced by the supplied dummy plug.

The built-in potentiometer can be turned to the right position after loosening the clamping claws. This facilitates the adjustment when installing.

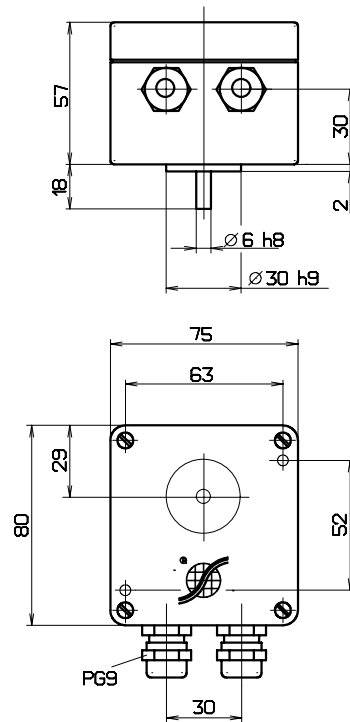


technical data

- 1.1 external dimensions..... : 80 x 75 x 57 mm
- 1.2 housing protection class..... : IP65
- 1.3 ambient temperature..... : -40°...+80° C (standard)
- 1.4 colour..... : RAL7001 (silver-grey)

option

- colour
- ambient temperature: -50°...+130°C
- dimensions cable entries



KDt1_093

including:

- manufactured protective housing with the built-in precision potentiometer / rotary sensor DP113... / DP120...
- dummy plug

| type | article # | order # |
|-------------------|--------------|---------|
| DP113 Sy Si Lt | 114.13 11 01 | 11090 |
| DP113 Sy KL | 114.13 11 14 | 11100 |
| DP113 D2 Sy Sp KL | 114.13 12 04 | 11095 |
| DP113 M A3 Sy KL | 114.13 12 06 | 11215 |
| DP113 M V3 Sy KL | 114.13 12 18 | --- |

Other precision potentiometer / rotary sensor can be obtained on request.

Please give the order# of the precision potentiometer / rotary sensor you have chosen with your order. The precision potentiometer / rotary sensor has to fit on the protective housing. You get further information / technical data about the precision potentiometer / rotary sensor from the corresponding datasheets.

housing + accessories article #: 113.248901
 sheet: KE1181.DOC
 updated: 30.04.02
 order #: 11514
 side: 11 - 18